



Medit Intraoral Scanner Lineup

**MEDIT**





Digital Dentistry,

*Your Way*

*Maximize efficiency and precision with Medit*



At Medit, we are not just about creating products; we are re-imagining possibilities.

Our commitment to innovation and customer care propels the digital dentistry revolution, offering 3D digital solutions that transform dental clinics and labs.

With our award-winning intraoral scanners, based on our own patented state-of-the-art technology and collaborative software, we are setting new standards in dental technology.

## Our Medit Community

With continuous feedback, active discussion, and helpful suggestions, the Medit community is always connected as customers and colleagues actively support and help one another.

There's a reason why over 100,000 dental professionals around the globe trust us.

Scan the QR code to join the Medit revolution worldwide and experience it yourself!



User Group



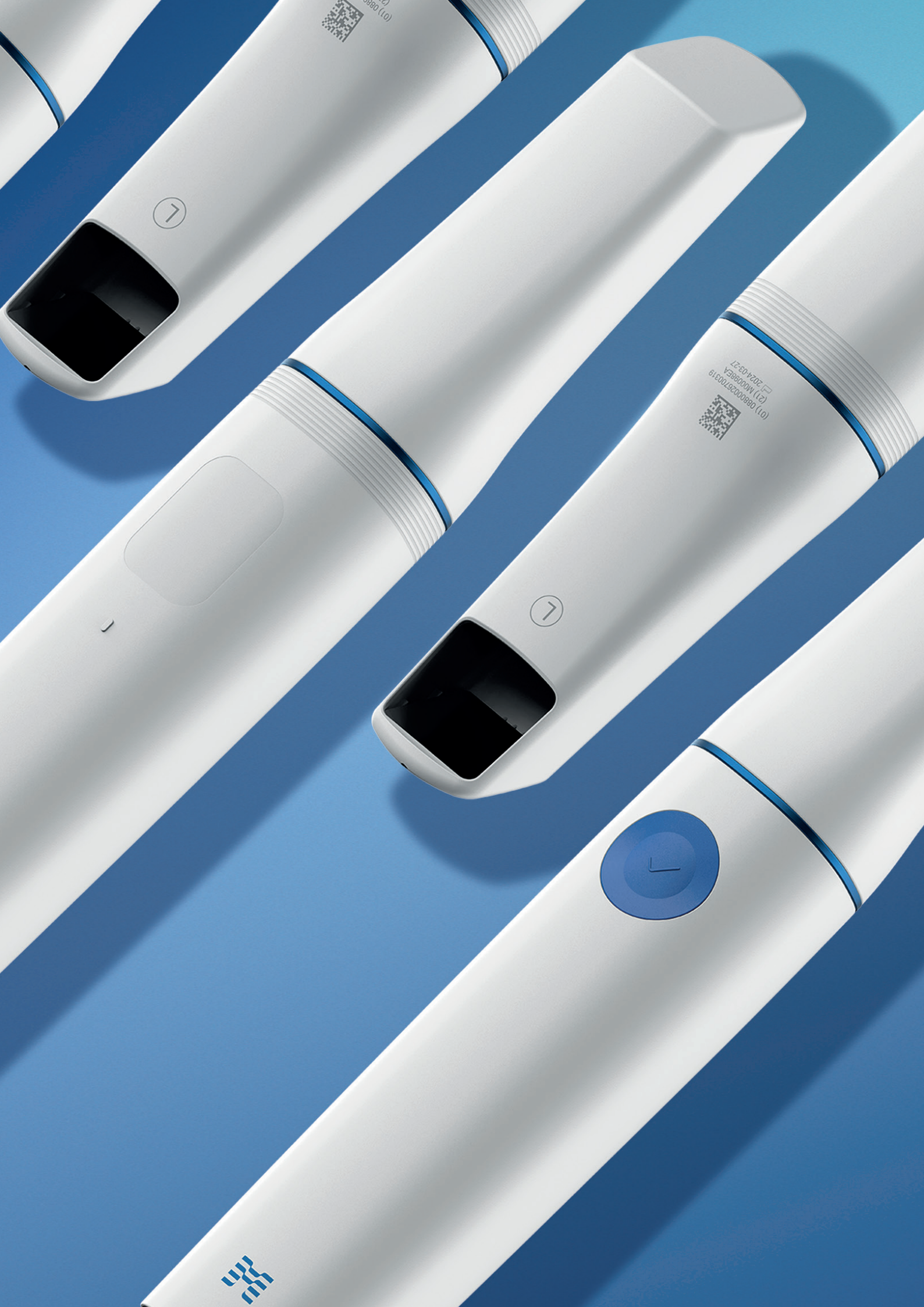
Medit Academy



Help Center

# Infinite Possibility





08600267013 9  
(1) MIDURCA  
(2) 2024-02-27

L

08600267013 9  
(1) MIDURCA  
(2) 2024-02-27

L

L





MEDIT *i*900 classic

MEDIT *i*900

Effortless Precision,

*Your Way*

# Effortless Precision, *Your Way*

*Advanced scanning technology available in both  
Touch and Button interfaces.*



## **Fast, Easy Scanning for an Effortless Workflow**

- Capture a larger field of view in one go, enabling quicker scans.
- Easily scan edentulous patients for efficient treatment.



## **Compact, Lightweight and Comfortable to Handle**

- Weighing just 165g, lighter than a smartphone-to reduce wrist strain during extended use.
- Slim, ergonomic design for a comfortable and secure grip.



## **Seamless Hygienic Design That's Easy to Clean**

- Seamless, unibody design for easy cleaning.
- Built-in UV sterilization keeps the device clean from the inside out.

---

### **Light & Compact**

165g wand weight  
223mm compact size

---

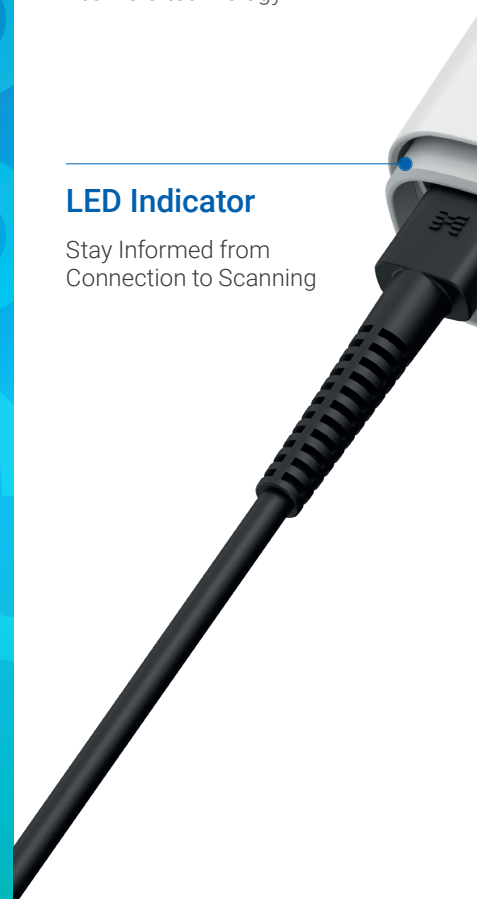
### **3rd-Generation Optical Engine**

Advanced 10-bit  
camera technology

---

### **LED Indicator**

Stay Informed from  
Connection to Scanning



*i9000*



### Tactile Button

Click and scan with confident precision



### Wand Tip

Multiple tip sizes to customize patient comfort

### Intelligent Sensor

LED and haptic feedback

### Touch Band

Real-time, light and haptic feedback



### Fast Preheating

Ready to scan instantly

### Touch Pad

Customizable command actions  
Mouse-free with smart interaction



### Unibody design

Jointless design with perfect balance  
No biohazard concerns  
Reinforced, hassle-free cable



# Medit *i700*: The Lightweight Powerhouse

Fast, precise scanning - making visits quicker and more comfortable without sacrificing accuracy. With both powerful hardware and intelligent software, the Medit *i700* is the key to unleashing your clinic's full potential.





Remote Control Mode

7

UV-C LED Disinfection

2X Super Fast

245g Featherweight

Detachable Cable





## No More Wires

Free from wires, scanning is comfortable at any angle. Scan proximal areas effortlessly without constraints in movement.



## Simply Switch & Scan

Scan effortlessly across multiple chairs. With additional hub setup, easily scan across multiple chairs with a single click.



## Supercharged Yet Light

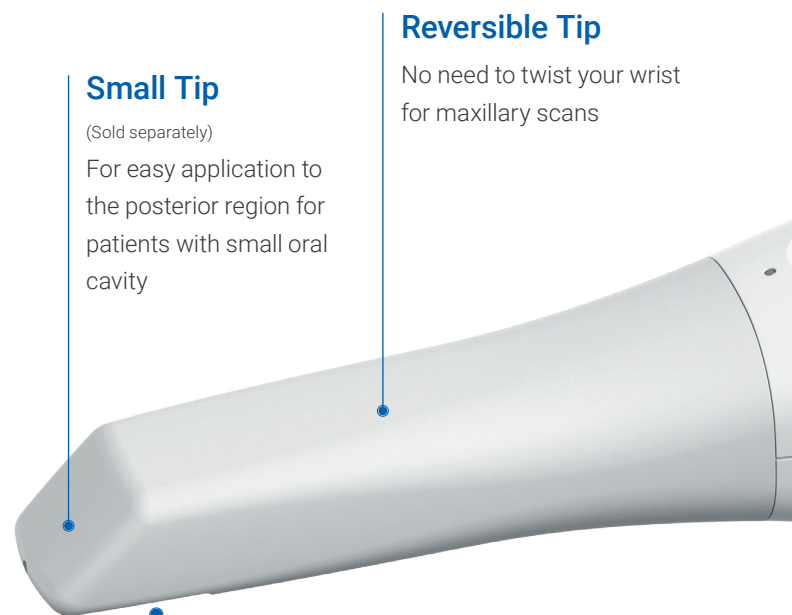
Outstanding weight balance even with a battery attached for added comfort and uninterrupted operation with long battery life (three batteries included).



## Powerful Hardware Meets Versatile Software

Optimized for convenience. Not only from hardware aspects, but also software. *i700 wireless*, packed with the latest of MEDIT technology.

MEDIT *i700 wireless*



### Small Tip

(Sold separately)

For easy application to the posterior region for patients with small oral cavity

### Reversible Tip

No need to twist your wrist for maxillary scans

### Wider Scan Area

Enlarged scanning window captures large areas at once while maintaining the small size of the scanner head

# Beyond *i700's* Proven Tech

Still the same **super fast, light, and accurate *i700***.  
But now **wireless**.



When the scanner's cable disappears, so do restrictions to scan movements. Strengthened impact resistance minimizes damage from accidental drops. Weight balanced design of the *i700* wireless provides a stable, comfortable scanning experience.

\*Performance may vary according to usage conditions.

# The Brain of the *i700* with a Splash of Color

**Super Accurate,  
Super Light,  
Super Smooth.**

The digital workflow begins with accurate data.  
Medit *i600* precisely acquires data for effortless digital dentistry.

**\*High accuracy**

**Full-arch accuracy: 10.9  $\mu\text{m} \pm 0.98$**

\*Acquires accurate scan data from anterior segment to the occlusal surface

## Astonishing Scanning Experience

**Light,**

245g featherweight with improved grip for comfort.

**Smooth,**

Improved speed and optimal scanned images deliver a smoother scanning experience.

**Vivid,**

Transmits vivid scan data via the new optical system used in the Medit *i700*.

# Scan Swiftly with Confidence



Take full control of your scanning with clicks of one button.

No need for numerous cables and hubs!

Simply Plug & Scan using a single cable for direct connection with a PC.



180° Reversible Tip



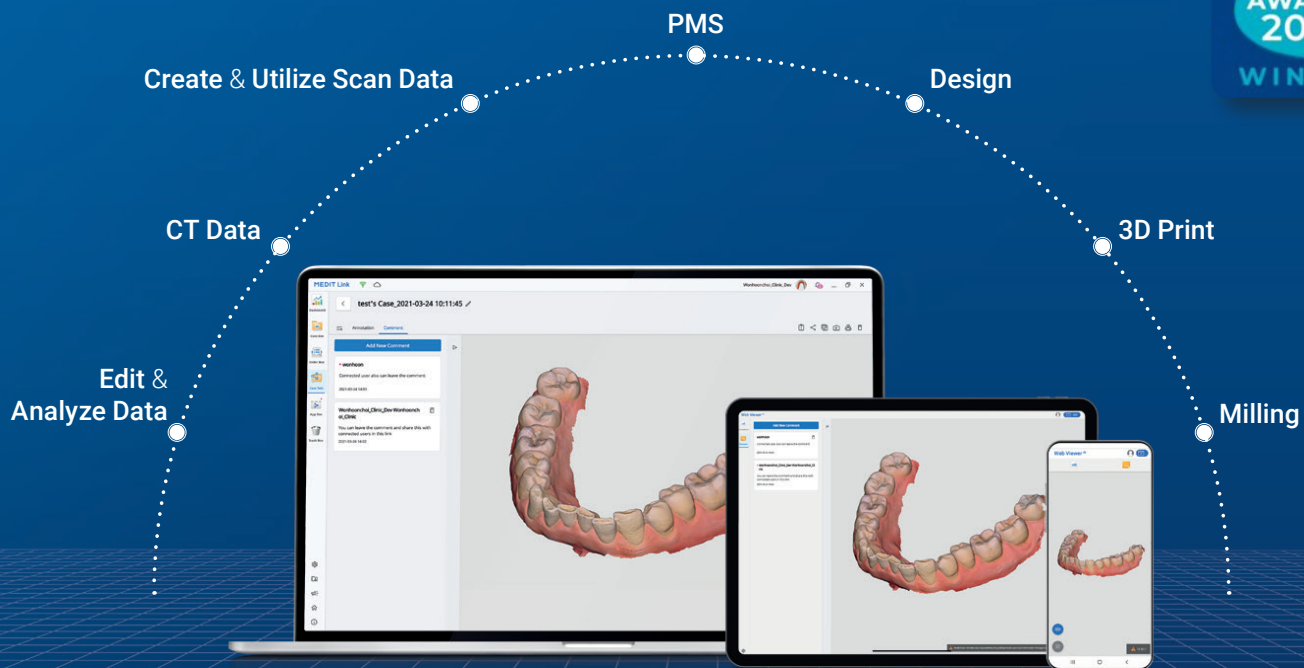
Scan Start Button



Detachable Cable

# Medit Link

Effortless clinic data management with exceptional results.



**Connect to any device** easily, anywhere

Create and manage scan data matched with patient information in the electronic chart program and link them with treatment solutions of various workflows. The various apps within Medit Link help provide a better consultative experience that is easier for patients to understand.

- Encrypted cloud storage for reliable protection against cyber security attacks.
- Enabled data sharing and real-time communication between dentists, patients, and lab technicians.
- Accessible anytime, anywhere on a PC, tablet, or mobile device with internet connection.

Over the years, Medit has tirelessly refined its software, culminating in a comprehensive suite of industry-leading digital dentistry applications. Offering unparalleled value to our users, Medit has set the standard for innovation and functionality, earning recognition for the best IOS software applications in the field.

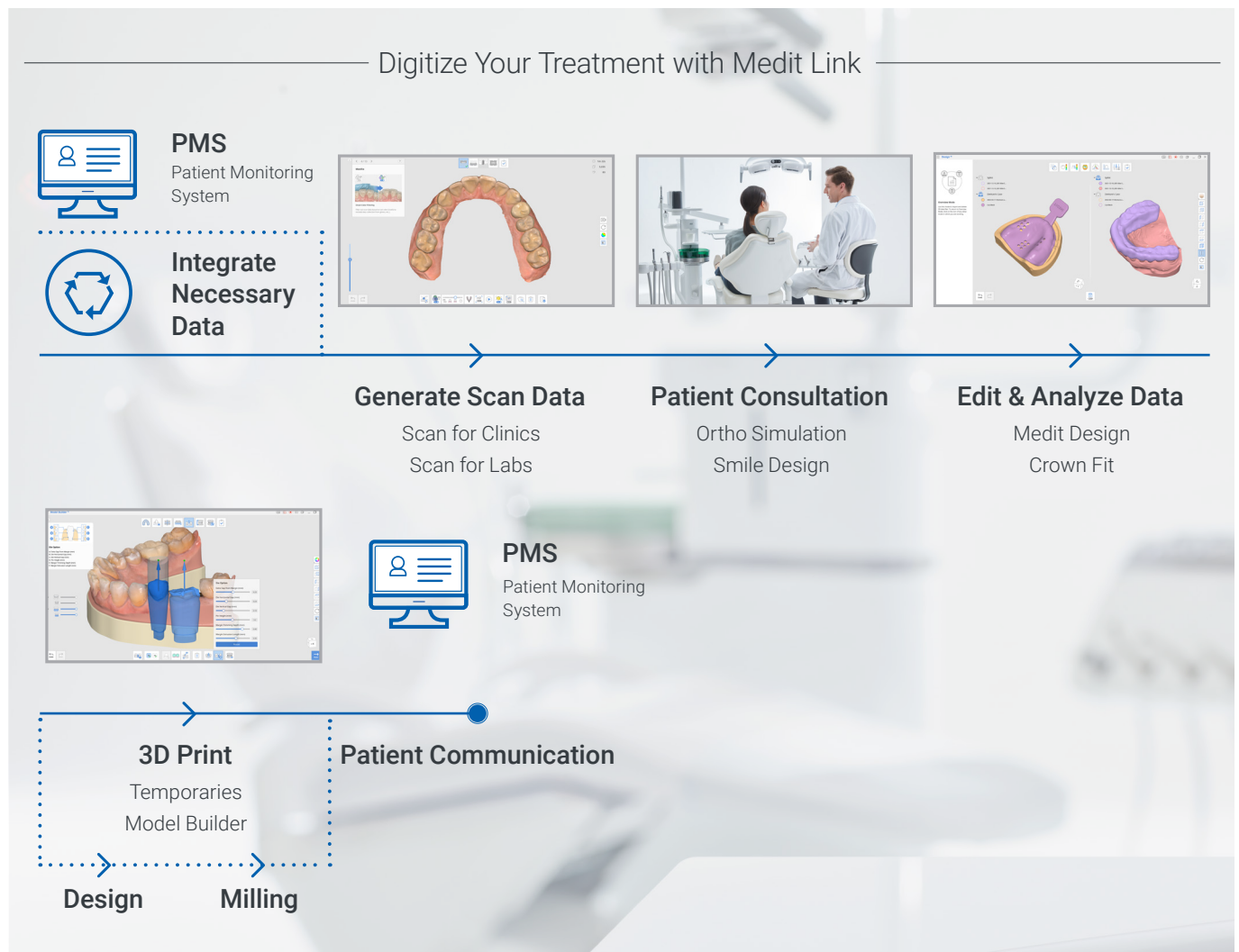


Download **Medit Link**

# MEDIT Link



# Digital Dentistry with **Medit Link & Medit Apps**



## Use Your Scan Data for Much More

Scan data created with the Medit scanners can be linked to the workflow of various solution providers via Medit Link. The data can also be used with any software that can open standard 3D formats such as STL, PLY, and OBJ as we continue to expand the utilization of our open system.

### What you can do in Medit Link :


Clear aligners | Crown and bridges | Implant-supported restorations | Full and partial dentures | Orthodontics | Implant surgical guides | Sleep apnea devices | Dental models | 3D printing and more.



### Medit Apps

Medit Apps quickly introduce digital workflows using scan data and help you utilize them in a diverse range of cases. You can analyze data, create restorations and models, and communicate with your patients in the simplest way. With Medit Apps, a lot more can be done on the chairside like designing splints, temporaries, bridges, and so on! Additionally, there is no subscription cost or annual fee to be a part of the Medit ecosystem.

# Medit Intraoral Scanner Lineup Comparison

Category		i900 classic	
Model			
Scanning Technology	Imaging Technology		
	Anti Fogging Technology		
Accuracy	Full Arch		
Handpiece	Interface Type	Button	
	Dimensions	223 x 37 x 35 mm	
	Total Weight	165g	
Tip	Scan Area	18 x 15 mm	
	Autoclavable	Sterilize Sterilize	
	Reversible Tip	No	
Special Mode	Remote Control Mode	No	
	UV-LED Disinfection		
	Smart Shade Guide		
	HD Mode		
MAC OS Compatibility			
Connectivity	Connection Type		
	Plug and Scan		
	Detachable Cable		



Find Your Perfect Scanner

i900	i700 wireless	i700	i600
			

3D-in-motion video technology / 3D full color streaming capture

Adaptive anti-fogging

10.9  $\mu\text{m} \pm 0.98^*$

Touch	Button	
	313 x 44 x 47 mm	248 x 44 x 47 mm
	328g	245g
	15 x 13 mm	

ize for 10 minutes at 135°C (275°F) at gravity type and dry for 30 minutes.

for 4 minutes at 134°C (273°F) at pre-vacuum type and dry for 20 minutes.

	Yes	Yes
	Yes	No
Yes		No
	Yes	
Yes		No
	Yes	
	Wired USB 3.0	
	Yes	
	Yes	

\* May vary depending on scan object



[www.medit.com](http://www.medit.com)

English